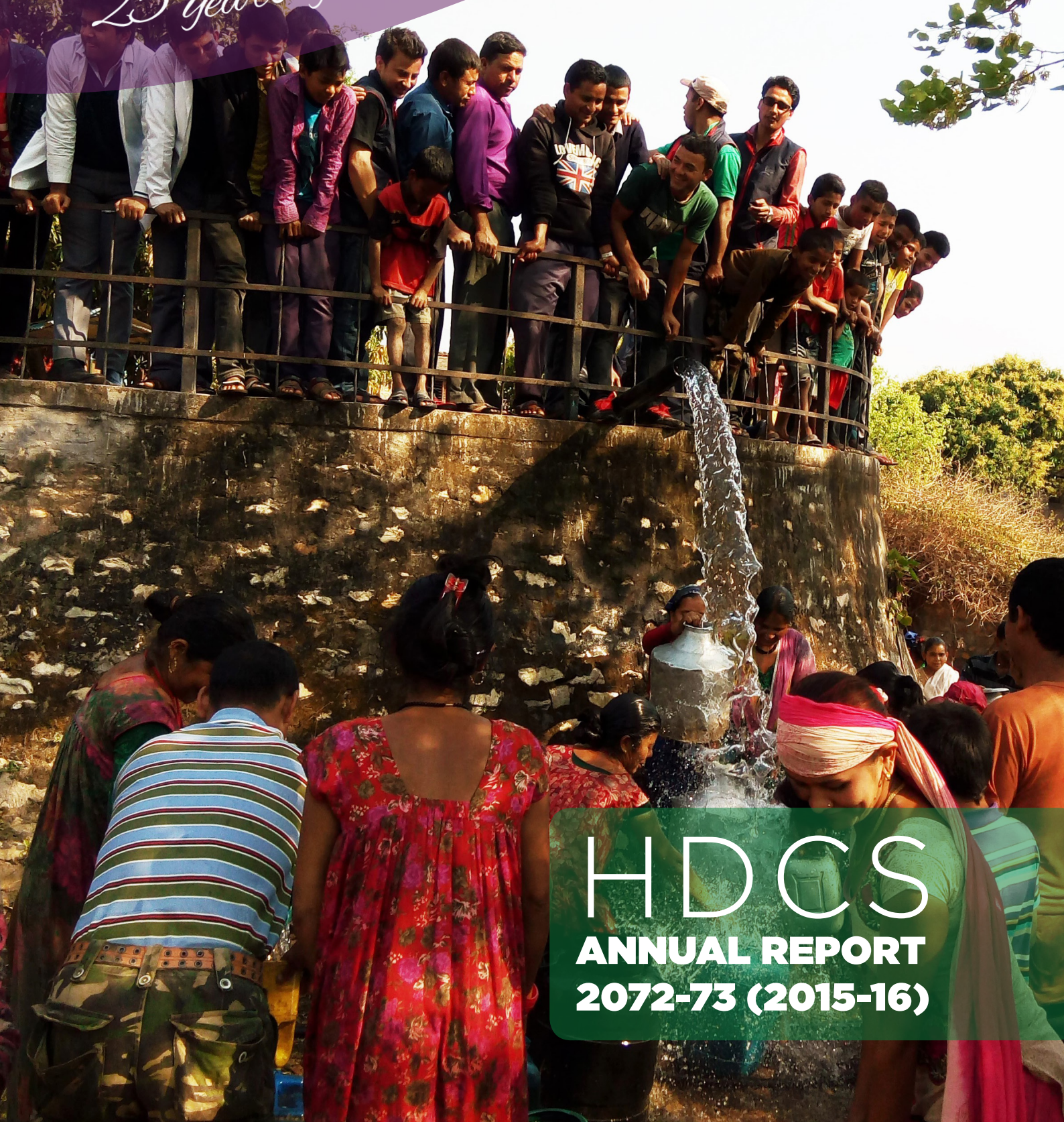




मानव विकास तथा  
सामुदायिक सेवा  
HUMAN DEVELOPMENT AND  
COMMUNITY SERVICES

*25 years of righteousness, honesty and service*



**HDCS**  
**ANNUAL REPORT**  
**2072-73 (2015-16)**





*Locals rest under the shade after a long day's walk*

## VISION

To be living  
witnesses of God's  
love

## MISSION

To transform  
communities through  
our  
Services

## VALUES

Righteousness,  
Honesty & Service





# CONTENTS

Message from the Chairperson .....	4
Message from the Executive Director .....	5
About HDCS .....	6
25 years of Righteousness, Honesty & Service .....	8
Lamjung District Community Hospital, LDCH .....	11
Chaurjahari Hospital Rukum, CHR .....	12
Public Health Program, PHP .....	14
Asha Bal Bikash Sewa, ABBS .....	17
Kathmandu International Study Center, KISC .....	19
KISC EQUIP .....	20
Community Radio Initiative Nepal, CoRIN Afno FM .....	23
Achievements and Awards .....	25
Financials .....	26

# MESSAGE FROM THE CHAIRPERSON



As I write to you, I realize how quickly a year has passed by in my one year of being the Chairperson of HDCS. I feel honored taking this responsibility of HDCS for the second time. It gives me immense pleasure to see the organisation grow to this height by walking through the challenges and adapting to it. Be it in the hospitals or in the communities, it has turned these challenges into opportunities to serve the poor and the needy. I really feel proud to see some of HDCS's pragmatic approaches due to which seemingly impossible and hopeless situations in its operations have turned into possibilities.

HDCS has seven different projects within its three key sectors of health, education and community development. These projects are implemented with an emphasis on the rural areas of Nepal. But what makes the organisation unique is that there is a shared sense of principles, morals and values of 'service to humanity with an honest heart' which binds all projects in its outlook.

This year HDCS is celebrating its 25th Anniversary and the team has been working to make this event a memorable one. The theme of the celebration is '25 years of Righteousness, Honesty and Service'.

Last year, Nepal was deeply shaken by the earthquake and HDCS pulled in all efforts to help the people in need. The service is still being provided based on the needs of the community as the impact of the devastating crisis has not been fully mitigated. Future vision and endeavors of HDCS is to expand itself to give quality education and health services to enrich the lives of many more. With the vision to reach new horizons there could be new challenges but I am confident that HDCS will be able to turn the challenges into opportunities as it has been doing since its long years of service. HDCS remains an example in holding strong to its foundations and helping many underprivileged people in building a better society.

I thank the Government of Nepal, national and international partners, supporters, executive board members, all general members, executive director and all the staff for making your efforts to bring HDCS this far.

*Nastu Sharma, PhD  
Executive Board Chairperson*



# MESSAGE FROM THE EXECUTIVE DIRECTOR

The 25 years journey of HDCS presents a story of hard work, success, challenges and growth. It gives me great pleasure to present to you our annual report of 2072-73 which brings forth the history and milestones of our organization.



Health and education are crucial aspects of the human capital and important development goals of all countries. The impact that poverty has on our people over their health, well being and their children's education is complicated and extreme. HDCS strives to fill that gap by enabling communities to access better health care facilities, quality education and a voice for community development.

Together with strengthening the educational and health facilities, there is also a strong need to enhance the community through advocacy and awareness. Our focus is to create an enabling environment for the marginalized and underprivileged through Health, Education and Community Development. While we move forward to achieve our goals, there will be challenges. We believe that challenges are not obstacles rather an opportunity to learn and grow while our vision is to reap compassion in our services and transform communities.

I would like to thank our dedicated Board of Members, donors, partners and staff. Thank you for helping us to run our projects and programs. We would not have made it this far without your support.

We share our daily bread with the poor, even at times when obstacles are plenty. Here is to the 25 years that has inspired more compassion and commitment in transforming and saving many more lives than ever.

*"He who sows iniquity will reap sorrow, and the rod of his anger will fail.  
He who has a generous eye will be blessed, for he gives of his bread to the poor"*

God Bless,

*Tirtha Thapa, PhD  
Founder & Executive Director*







# CORE COMPONENTS

## HEALTH

The overall objectives of the health sector are as follows:

- To support the health sector of Nepal through essential health care packages;
- To ensure and increase accessibility of health services to poor and marginalised rural people;
- To reduce the risks during pregnancy and childbirth, and to address factors associated with mortality and morbidity;
- To increase access and utilisation of quality family planning services which are safe, effective and acceptable to individuals and couples;
- To reduce prevalence of malnutrition;
- To promote public health by giving high priority to education, information and communication programs in order to transform the access to information and message about health into practice.

## EDUCATION

The overall objectives of the education sector are as follows:

- To improve the quality of education through Teachers Training programs in order to enable capacity building in school communities;
- To provide financial aid through scholarship programs in order to make quality education accessible to low income marginalised families;
- To provide vocational training to children with disabilities in order to empower them through self reliance and social integration.

## COMMUNITY DEVELOPMENT

All the projects and components work within the scope of community development. The radio programs that have been going on for seven years have been a crucial dimension of the community development as they help to raise awareness among communities to demand for their rights and engage in dialogues.

y Hospital

ram  
ter EQUIP

School Support Program  
Kathmandu International Study Center EQUIP

Suspension Bridge 1994-1995

Non-Formal Education 1991-1998

Promote Nepal 2001-2004  
Management Training Program

School Support Program  
Kathmandu International Study Center EQUIP

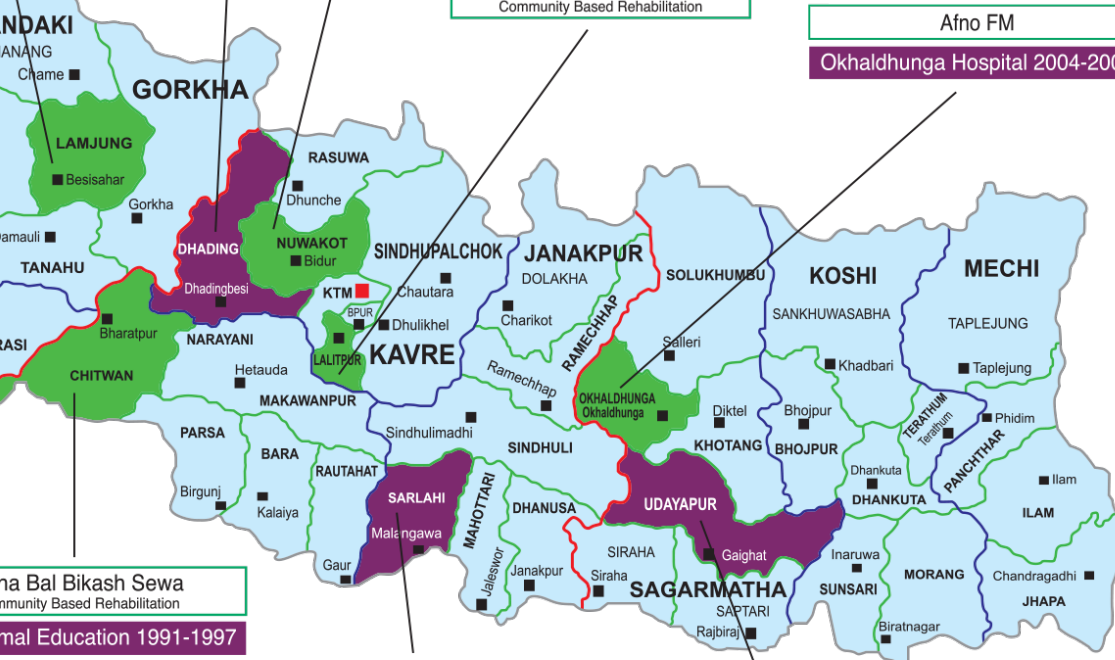
HDCS HEAD OFFICE

Kathmandu International Study Centre

Asha Bal Bikash Sewa  
Community Based Rehabilitation

Afno FM

Okhaldhunga Hospital 2004-2008



ha Bal Bikash Sewa  
Community Based Rehabilitation

mal Education 1991-1997

Nawajeewan Secondary School  
1998 - 2002

Uplift Program 2004-2008  
Community Support Program

Non-Formal Education 1991-1997

Current Project District  
Past Project District





Staff orientation at CHR

## 25 YEARS OF HDCS

HDCS started in 1991 to serve the community through a number of small projects in the field of health, education and community development. Building a suspension bridge in Dhading, non formal education and vocational trainings are some examples of its early community projects. After ten years of functioning at the community level, HDCS formalised and strengthened its partnership with the Ministry of Health by contributing to the objectives of the health sector of the Government of Nepal.

The first major health project was initiated in 2001 by working together with the Government of Nepal. HDCS helped transform the government run Lamjung District Hospital to the present Lamjung District Community Hospital (LDCH). At the same time, the Rukum Hospital at Chaurjahari VDC (CHR) established by TEAM was in grave challenge due to the ten years civil war. The hospital was shut down for over three months and it was then handed over to HDCS by the Government of Nepal for its complete management and revival. Similarly, in

2004, United Mission Nepal (UMN) announced it will not run the Tansen Mission hospital. HDCS again took the initiative to manage the hospital in Tansen as well as in Okhaldhunga till 2008. They were then handed back to UMN in 2008.

From 2004-2008 HDCS transformed, managed and developed a total of five hospitals in Tansen, Dadeldhura, Okhaldhunga, Lamjung and Rukum districts. A 10-year agreement between Ministry of Health and HDCS was signed on 5<sup>th</sup> January 2015 for Chaurjahari Hospital Rukum (CHR) and Lamjung District Community Hospital (LDCH). Besides this, HDCS has also been running a Public Health Program (PHP), a preventive health program, for the past two years in Rukum. Progress is ongoing to start the PHP in Lamjung as well by October 2016.

With regards to education, Asha Bal Bikash Sewa (ABBS) is a learning disability centre initiated by Ms. Tulsa Sharma in 1994. HDCS

began supporting the work of ABBS in 1999 realising the need for such a place in the community. ABBS, which first started with only three children, slowly transformed into a day care centre with over 80 children with learning disabilities receiving its services.

Similarly, in 2004, when it was informed through the Ministry of Education about the closure of Kathmandu International Study Centre (KISC), HDCS stepped in to extend its support. In 2007, the first agreement was signed between Ministry of Education (MoE) and HDCS for United Mission to Nepal (UMN) to hand over the ownership of KISC to HDCS. KISC, which had first been established for the children of missionary families, is today an inclusive multi-national community of students, teachers and volunteers. With the entry of HDCS, KISC also started a primary school and established a social wing - KISC EQUIP, a teacher training program that empowers educational communities, namely in Dadeldhura, Lalitpur, Lamjung, Nuwakot and Palpa. Other components of the program include distribution of educational materials, setting up of libraries, and scholarship programs for students in dire need.

Besides, HDCS has also contributed largely

towards community development in the field of communication through CoRIN Afno FM. Two radio stations have been created, one in Okhaldhunga and the other in Dadeldhura. These radio stations have been an outreach to many for educational and informational purposes and many times have touched the personal lives of the community as well. Afno FM first began with the concept of having a radio station in each hospital project area that HDCS managed. Finally, through a joint partnership with Feba in 2007, whose mission was similar to HDCS', it was granted the registration from the Government with Feba's support. Feba began its support financially, technically and further along through trainings and regular visits by professionals working with Feba. This was a great boost to Afno FM that established into CoRIN Afno FM.

From the early days of HDCS, the organisation has held the same belief to be the living witness of God's love and to transform communities through the love of God and the services of HDCS. The call of HDCS will continue to grow stronger as it expands in the coming days to touch many more lives of the people in Nepal and beyond.







# HEALTH

*A mother waits for her son's routine check up at the hospital*



# LAMJUNG DISTRICT COMMUNITY HOSPITAL (LDCH)

Free Hospital camp	VDC/ District	No. of patients served
Free Eye Camp	Ghermu/ Lamjung	610
Free Dental Camp	Ghermu/Lamjung	210
Free General Health Camp	Pachowk/Lamjung Bichaur/ Lamjung Nayadanda/Lamjung Dharapani/ Manang	1,576
Women's Camp UVP	Ilampokhari Tagigaun/ Lamjung	123
Hydrocele Camp	Dhamilikuwa/ Lamjung Besisahar/ Lamjung	81
Health Camp for Children with Disabilities	Besisahar/ Lamjung	18
<b>Total no. of patients</b>		<b>2,618</b>

specialised wings. The hospital further provided trainings on SBA (Skill Birth Attendant) and Mid Level Practitioner (MLP) to advance the level of the staff's skill. To strengthen the hospital services, time was allocated to train the staff. LDCH was also able to conduct seven free medical health camps in partnership with various concerned health agencies. The camps included Uterine Vaginal Prolapse (UVP) and Hydrocele camps. At the camps, many patients were referred to the hospital and selected for surgery. They were given further treatment completely free of cost at the hospital.

Lamjung District Community Hospital was a government district hospital that was handed over to HDCS in 2001 by the Government of Nepal. The support of partners and donors was crucial to equip the hospital with new technology, increase in the total number of beds (from 15 to a 50-bed hospital catering to more patients), and for the capacity development of staff and overall management.

The services provided cover OPD, ER, delivery, dental, lab, X-ray, USG, ECG, TB/Leprosy/HIV and ophthalmic care. This past year there has been an increase in the patients receiving treatments at the hospital in all its

## GROWING OLD TOGETHER



An elderly couple with no other family members came to the hospital. They said, 'We do not have anyone to depend on financially, we manage on what little we have. Treatments can be very expensive and we were not sure if we could afford it'. After inquiry, LDCH provided free medication to the couple on the basis of government policy of free healthcare for elderly people. The elderly couple shared their blessings with the hospital and smiled upon the hope LDCH restored in them.





# CHAURJAHARI HOSPITAL RUKUM (CHR)

Nestled in the mid west region of Nepal lies Rukum, tucked away from the hustle and bustle of the city life. It is a region where extreme poverty has prolonged for years, and where the 10 long years of the civil war have left a deep seethed impact. With minimal health and educational support, Rukum continues to face greater difficulties and challenges in development.

The Chaurjahari hospital is an outreach to not just the people of Rukum but also the surrounding districts of Jajarkot, Dolpa, Salyan and Rolpa. People walk miles to reach the hospital crossing tough terrains because of the inaccessibility to health care facilities in Rukum

and surrounding districts. CHR is a hope for many to receive general care and treatment. Besides helping people suffering from illness and deprivation, the hospital also provides counseling to patients when in need.

However, many people are still not aware about the various health benefits being offered at CHR. Therefore, CHR additionally works with partners, supporters and government offices to advance programs and awareness campaigns as an outreach to people not just living in Chaurjahari but in the surrounding districts as well. This year the hospital has built new wards to add more beds as the inflow of patients is on a steady rise.

## HIGHLIGHTS

- Operated 37 women for uterus prolapse under the collaboration and financial assistance of Women Reproductive Right program CAED Surkhet, and Care and Cure Nepal;
- Pelvic Organ Prolapsed (POP) prevention training received by 27 staff;
- One month OT scrub training received by two nurses at Tansen Mission Hospital;
- Conducted outreach clinic 12 times;
- Conducted free health camps eight times in different areas of Rukum.



## FIGHT AGAINST LIFE AND DEATH

Bhim Lal BK and his father arrived at the hospital. Having travelled for two full days, they looked extremely exhausted. The old father quickly opened up about his son's health issues. He also added that he had great hope from the hospital for his son's recovery. The young boy was suffering from Peritonitis with Pyoperitonium (pus in abdomen). It was a severe case but they did not have enough money to travel to the city for premium care. Also, time was very limited to save the boy's life. The doctors at CHR took the decision to operate the boy under their care and the operation ran successfully.



After 6 weeks in the hospital, the baby showed signs of recovery from malnutrition. The baby received artificial oxygen, intravenous fluid, antibiotics and mother's milk. Currently, the baby weighs 1500gm.



A patient who was severely suffering from intestinal perforation (hole in the intestine) smiles with his wife after successful completion of the emergency operation.



## PUBLIC HEALTH PROGRAM (PHP)

In Nepal, due to illiteracy and poverty, treatment and services rendered by hospitals or health care institutions remain unknown to many. People die not knowing the cure for their diseases or even worse, without knowing what they are suffering from. Therefore, health education, and more importantly, effective communication mechanism is paramount to positively influence the health and well-being of people.

The Public Health Program initiated by HDCS conducts health awareness campaigns, health education programs, and capacity building of staff and communities for the physical, mental and social well being of families and communities in its hospital project areas. It collaborates with local and international development organizations to educate and

inform people on the preventive measures and precautions needed to lead a healthy life. PHP also conducts regular camps and monthly classes to evaluate the effectiveness of its program as well as programs regarding sanitation, hygiene, and reproductive health targeted towards community schools, local people and community leaders.

Maternal and Child Health Promotion (MCHP) is a major component of HDCS' PHP to improve the mother's and child's health. MCHP functions primarily to increase awareness level through Ama Surachchya Classes (Safe Motherhood Classes) to increase institutional delivery, to strengthen government health facilities and capacity of government health workers, and to conduct free Reproductive Health camps to make RH facilities accessible.

---

### HIGHLIGHTS

- Increased community awareness through Surachchya classes conducted in eight VDCs on different topics like ANC/PNC, family planning, ARI, malnutrition, diarrhea, nutrition, immunization, early marriage, teenage pregnancy and Pelvic Organ Prolapse. A total of 27,272 mothers participated among which 1562 were pregnant women;

- A total of 1681 participants present in the community orientation program this year. Major issues discussed were the importance of institutional delivery, immunization, communicable diseases, and malnutrition;
- 4225 students benefitted from the School Health Education Program conducted in May at various sites and many schools of the eight VDCs. The different topics covered were WASH, reproductive health, personal hygiene, menstrual hygiene management, waste management and first aid response. Refreshments to students and first aid box per school were provided. School health clubs were also formulated;
- 48 episodes of radio programs produced under the project were broadcasted by Sani-Bheri FM, Rukum. The programs revolved around Maternal and Child Health issues;
- Emergency equipment and obstetric kits provided to all the health facilities, mainly focusing on the birthing centres;
- Successfully conducted eight Reproductive Health camps at all working VDCs. A total of 2081 patients attended. Different types of health services were provided for conditions such as FP, uterine prolapsed, arthritis, skin problems, dental caries, back pains, PID, UTI, gastritis and allergies. ANC check up, counseling services and implant insertions were also provided.



## SAVED BY FAITH

Kalpana bears the double burden of belonging to a backward caste and a low income earning family. A local inhabitant of Simli VDC ward no. 4, she tells us how difficult life has been for her and her family. Food is scarce and if her father is not able to earn money or bring some food home, everyone stays hungry. The family has fields but they do not have any resources to cultivate their fields.

Kalpana started to grow thinner by the day due to insufficient food, causing her to lose weight consistently. Slowly, her stomach started to swell up. Her father took her to traditional healers several times but they could not solve anything. One day they made a visit to a nearby health post. The staff there

informed them that his daughter was affected by malnutrition and that he should take her to the big cities for a proper treatment. But the father couldn't do so because of their poverty. So they waited until help and free treatment arrived.

Later, one day from the local FM radio they came to know that MCHP project was conducting free Reproductive Health camp at Simli VDC. When Kalpana and her father came to the camp, she was immediately noticed by the Project Officer of MCHP and was shown to the doctors. Eventually, she was given free treatment and rehabilitation at Chaurjahari Hospital Rukum at the request of the Project Officer.



Kalpana B.K, malnutrition affected victim of Simli VDC-4, Rukum, who was detected at the RH Camp organised at Simli VDC.



Boys smile for the camera during their physiotherapy class at ABBS

# EDUCATION





Disability in Nepal is stigmatized as many families take it as a curse. The chance of a disabled child having a future like a normal child feels like a distant dream to many. Asha Bal Bikash Sewa was established in 1993 to change this very impression of children with learning disabilities. ABBS, focuses on the daily activities of the children and tries to develop them both physically and mentally through different therapies such as physiotherapy, music, hydro and art therapies and other learning activities. These therapies and interactive sessions assist the children to become independent and self-sufficient to integrate with the community. ABBS has two centers; one in Kathmandu and the other in Bharatpur, Chitwan District

with a total of over 100 children with learning disabilities benefitting from these centers. A key component of ABBS is Community Based Rehabilitation (CBR) that aims at facilitating livelihood options and community integration of the participants. Currently CBR program is conducted in Rukum under the community health program organized by HDCS-CHR. The trainings to support it are conducted at the Kathmandu centre. CBR workshops aim at counseling, training, detecting disability and providing physiotherapy to its participants. A parent shared this with the ABBS coordinator, Ms. Tulsia Sharma after one of the Community Based Rehabilitation (CBR) sessions at the centre:

“ I no longer look at my daughter the same way after taking the CBR program. I understand her so much more. She is a special child like any other. I’m grateful ABBS encourages parents to be a part of this. ”

## HIGHLIGHTS

- Admitted eight new students at ABBS in Kathmandu centre, and four new students in Chitwan;
- Participated in a workshop program organised by Himal Partners on “Strategy, Plan and Corruption”;



- Children at the Kathmandu centre received a small program on cleaning their teeth properly, organised by dental students of CMC Hospital;
- Sold candles and waffles worth Rs. 10,000 at the stall in KISC. The activity was aimed more at encouraging the students rather than generating income;
- Organised CBR training in Kathmandu from 4<sup>th</sup> Jan, 2016 to 14<sup>th</sup> Jan, 2016. 16 participants from different study and work backgrounds participated;
- 24 staff and parents participated in workshops conducted by International Child Development Program (ICDP).
- Conducted free health camps eight times in different areas of Rukum.



## CBR, RUKUM

This is a project that conducts students' general health check-up of ENT, dental and general healthcare. Awareness about the consequences they may face due to untimely check-ups, precautions and treatments for basic health problems are also provided. Activities also involve home visits and integration with PHP and other hospital related work. Recently CBR for school students included counseling to help deaf and vision impaired children research schools

suitable for them. Currently three students are in the process of getting admitted to proper schools.

## KRITI'S STORY

Kriti was only 3 years when she came to ABBS. She has cerebral palsy, resulting in her physical disorder.

The teachers recall how she could hardly sit or stand and it was a daunting task for her to do the daily activities. Initially Kriti was quiet and shy, but later as she started to engage in the programs and activities of ABBS she started to improve.



Kriti (left) holding a pair of socks she knitted with her friend Anajana.

Slowly but steadily she learnt to take her first steps at ABBS. As years have gone by, today her development is almost unbelievable.

She is independent, confident and a caring young girl today. She goes about completing her

daily tasks, helps her teachers voluntarily and is very active when it comes to dancing and singing during events.



## KATHMANDU INTERNATIONAL STUDY CENTRE (KISC)

KISC is an international K-13 school that offers an education system that is special. Along with academic strengths the children are surrounded with the values of Love, Community, Grace, Justice and Excellence. There are programs that enrich their lives through music, drama, social work and sports. KISC uses various forms of educative entertainment for children to be interactive, productive and to find deeper meaning in life.

At a very young age, children are taught to build better connection with the community. Working with the community at such impressionable age creates a deep sense of social responsiveness among the children and makes them more active and socially responsible citizens. Through KISC, KISC EQUIP was initiated. It is a teacher training program that helps facilitate teachers from rural and urban regions of Nepal to improve the quality of education.

### HIGHLIGHTS

#### STUDENT SUCCESS

(Graduation, academics, sports, art achievements)  
Two students achieved High Achievement Awards in the 2015 CIE Examinations for AS Biology and for AS Art & Design. In addition, a former student achieved one for AS Business Studies (having done 9 months at KISC in preparation for the exam).

#### CURRICULUM

2 of our PLC, Professional Learning Communities, have been working on creating the standards and objectives for math and science by the end of the year. Teachers from primary and secondary level have been creating this document that will hopefully flow through primary and secondary levels well.

#### PROFESSIONAL DEVELOPMENT

This term, our primary and secondary principals had their first of four classroom management trainings with all staff. This proved very successful and we have heard some very positive comments from staff about this training. They will continue with a second training in term 4.





The vision of KISC EQUIP is to bring transformation and change in Nepal where the educational necessities and facilities are rather low by improving the quality of education. The aim of the project is to provide educational trainings to school communities, teachers, school leaders and parents in various districts of Nepal. KISC EQUIP currently partners with 22 schools in 4 project areas in both rural and urban Nepal. This includes Palpa (10), Lamjung (6), Lalitpur (5) and Nuwakot (1). EQUIP also interacts with students through its School Support Program where it provides Tin Trunk Libraries to schools as well as scholarships

to students in dire need. EQUIP scholarship program continues to make a difference in the lives of the students who want to have an opportunity to continue their studies despite their difficult financial situation.

KISC EQUIP has a 5-year commitment with both Lamjung and Palpa projects. Our focus is to train teachers from pre-primary to grade 8 over the five-year period (2013-2018). This academic year of 2015-16, the focus is on grades 3 and 4. We aim to complete our training up to grade 8 by the end of academic year 2018.

## HIGHLIGHTS:

- 218 teachers received Subject Specific Training;
- 279 teachers received General Training;
- 48 school leaders received Leadership Training;
- 12 Christian teachers received World View Training;
- 4 teachers and staff of Bethel School received Kitchen Garden Training;
- 22 teachers of Rato Bangala School received Training in Creative & Critical Thinking;
- 451 teachers and school leaders received Post-Earthquake Training;
- Reproductive Health Workshops were conducted among 770 students;

- Parents' Seminars were conducted among 746 parents;
- 160 staff received training in World Vision;
- 90 students received scholarships from EQUIP this year with an equal ratio of girl and boy students;
- 15 EQUIP scholarship recipient students passed their SLC exam this year;
- 32 Class Libraries were set up in schools in Lamjung and Palpa.



## AGAINST ALL DEBTS

Pratika Gurung is 12 years old. She is currently studying in grade 6. She lives with her parents in a rented room in Besisahar. She originally comes from Banjha Khet VDC, ward no 6, Lamjung. Her father does cardamom farming in his village where he frequently visits from Besisahar.

Her father used to be a tour guide but his income declined during the insurgency time. Then he approached manpower offices to go abroad. But all his investments were lost when he was cheated by the manpower office. He has not been able to recover completely from the loss because of which his children's education was hampered.

KISC EQUIP has been sponsoring Pratika for the last 3 years. She is a very hard working student with a keen interest in extra curricular activities like drawing for which she received the first prize in the district level competition.

She wants to be a doctor when she grows up and serve the people in her community. Pratika's father acknowledges KISC EQUIP's help at such a crucial time.

“ Thank you for helping a financially poor father like me to educate my daughter. May EQUIP continue to help parents like me so that they can continue to provide education for their children. ”



*A woman smiles shyly wearing a  
turquoise blue cholo*

# COMMUNITY DEVELOPMENT



Neighbours draw in to listen as a woman is interviewed by our Afno FM staff, Binu Rai



## AFNO FM CORIN

Community radio plays a vital role in delivering messages of importance. It is a companion as well as a voice to empower and transform communities by creating well informed members. What makes Afno FM different is the connection it has been able to generate with its listeners. Many a times Afno FM has shared stories and experiences of people during difficult and challenging hours and many

listeners have positively supported each other. Afno FM is located in Okhaldhunga and Dadeldhura districts. The programs are based on health, agriculture, education, entertainment and community issues. The community programs are mostly focused on marginalized and disabled people as well as those going abroad.

### HIGHLIGHTS:

- During the emergency that unfolded after the earthquake, the radio became a great source of help for the people. Around 200 solar, winding and cell radios were distributed in Okhaldhunga, Dhading, Rasuwa, Makwanpur and Kathmandu. The radio station became a medium to help people remain calm and to provide information regarding the support they would receive in various places. Many times people reported that the radio had been their only way to reach the places where aid was being distributed. Information had served them to be alert and aware about the situation they were in;
- Earthquake victims got local and international support through Afno FM;
- The team also visited two higher secondary schools, Sagarmatha Janata Uchha Madhyamik Bidhyalaya and Shivaduti Uchha Madhyamik Bidhyalaya to distribute fruits, blankets, bags and cash scholarships;
- Both Okhaldhunga and Dadeldhura Afno FM's celebrated their 7<sup>th</sup> year of broadcasting this year.



## FINDING MY VOICE

Mr. Gorakh Man Rai is visually impaired. He used to live in a rented house with his parents in Siddhicharan Nagarpalika 5, Okhaldhunga but the house owner asked the family to leave. It was hard for Mr. Rai, as no one wanted to hire him due to his disability. He could not support his aging parents without a job. But

after hearing his story from the radio, people were willing to support him. He has received financial support and a new sewing machine to help his family sustain. He now feels that the radio has given them a voice and that there are people who understand their pain.

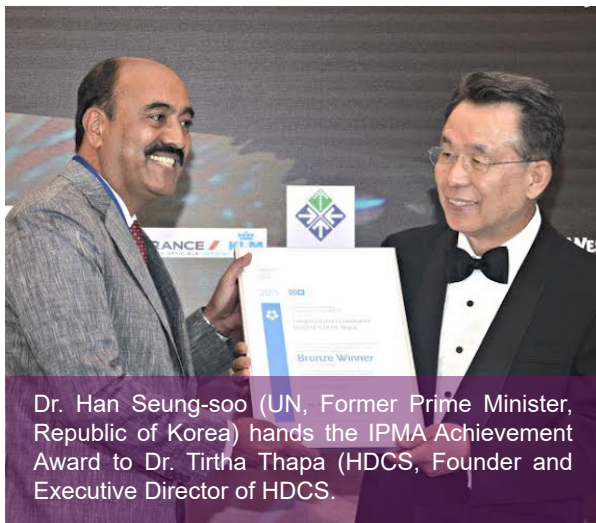


*Gorakh and his wife being interviewed by Afro FM staff*

# HDCS AWARDS AND ACHIEVEMENTS

## INTERNATIONAL PROJECT MANAGEMENT AWARD, IPMA

LDCH was evaluated for its services and hospital management by the IPMA and was selected as one of the participants to be on the top three. LDCH-HDCS won the bronze certificate in Panama amongst many other international projects that were participating. It was an inspiring experience for HDCS.



Dr. Han Seung-soo (UN, Former Prime Minister, Republic of Korea) hands the IPMA Achievement Award to Dr. Tirtha Thapa (HDCS, Founder and Executive Director of HDCS).

“ LDCH had undergone the assessment process according to the criteria for Community Service/Development Projects and has achieved the highest status of Bronze Winner in the IPMA achievement award. With this performance the project team has proven that with its project management approach it is in the ‘Top League’ in international project management. ”

- IPMA Award Management Board and Judges of the IPMA Achievement Award 2015

## NEPAL SAMMAN, 2072 – NATIONAL AWARD



On April 2016, His Excellency Nanda Kishor Pun (Vice President of Nepal) honoured Dr. Tirtha Thapa (Founder and Executive Director of HDCS) with "Nepal Samman 2072", a national award presented by Everest Foundation Nepal. Dr. Thapa was awarded for

his continuous dedication and contribution in the field of health and social development.

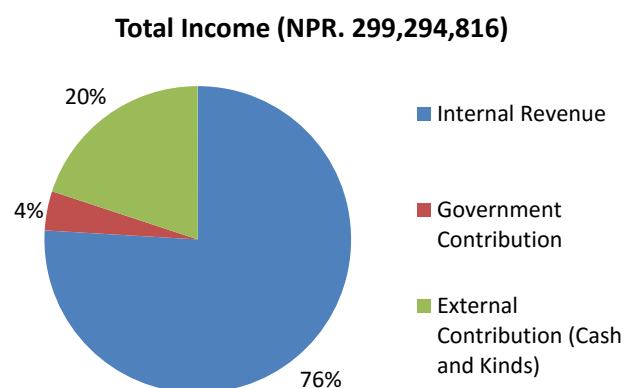
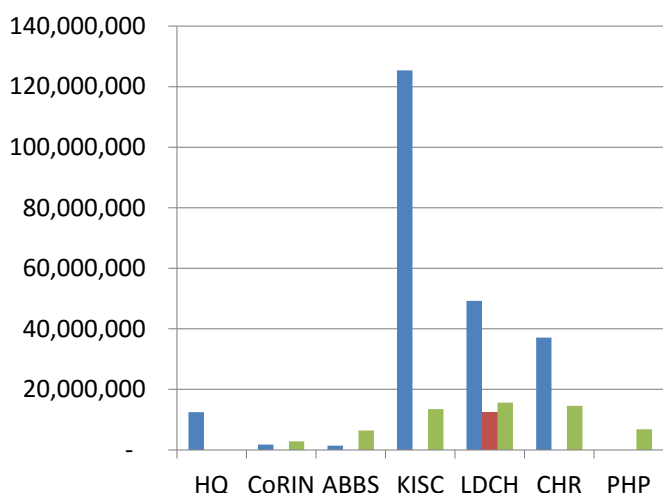
His inspirational and immeasurable contributions in health for marginalised communities, especially in districts such as Lamjung, Rukum and Dadeldhura were acknowledged. Besides, his efforts towards bettering the education, health and social integration of

children with physical and mental disabilities were also appreciated. He was lauded for his tremendous motivation and participation in consistently playing an active role in the transformation of the Nepali society.

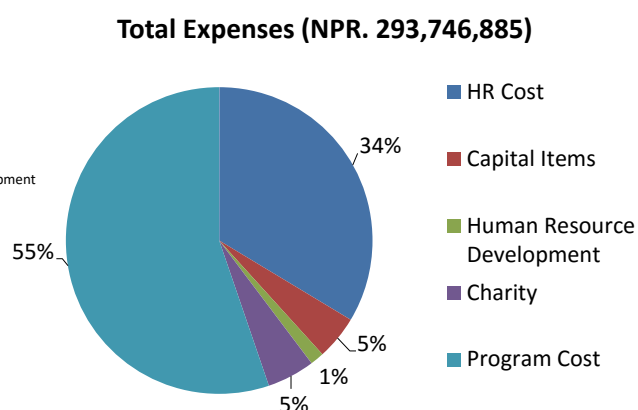
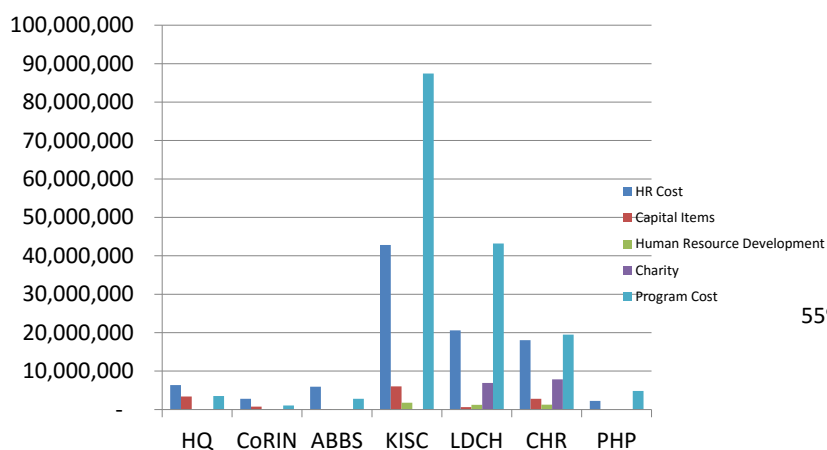


# FINANCIAL HIGHLIGHTS 2015-16

## INCOME



## EXPENSES



### ABBREVIATIONS

HQ : Head Quarter  
CoRIN : Community Radio Initiative Nepal  
ABBS : Asha Bal Bikash Sewa

KISC : Kathmandu International Study Centre  
LDCH : Lamjung District Community Hospital  
CHR : Chaurjahari Hospital Rukum  
PHP : Public Health Program

## HUMAN DEVELOPMENT AND COMMUNITY SERVICES (HDCS) TAX AND ETC. TO GOVERNMENT OF NEPAL FROM HDCS FOR FY 2072-73 (2015-16)

S.N.	Description	HQ	CoRIN	KISC	ABBS	LDCH	CHR	PHP	Total	Re-marks
1	Education Service Tax	-	-	965,528	-		-		965,528	
2	VAT	482,548	21,629	2,779,767	8,246	483,240	700,859	33,092	4,509,381	
3	Radio Royalty	-	91,113		-		-		91,113	
4	Vehicle Tax	118,850	-	120,480	27,230	-	-		266,560	
5	Tax to Municipality	99,944		378,029	-		-		477,973	
6	Visa Fees			4,698,468	20,000	20,000	30,000		4,768,468	
7	Remuneration Tax	468,597	50,508	4,335,877	29,155	765,881	347,297	37,667	6,034,982	
8	Social Security Tax 1%	26,772	15,251	203,740	40,385	234,809	111,150	13,438	645,546	
9	TDS-Consultancy fee	-		220,628	-	94,625			315,253	
10	Tax on House Rent	-	8,000	1,890,125	11,334	-	-		1,909,459	
11	Withholding tax (1.5% and 15%) on Goods and Services	28,428	1,784	-	301	48,320	-	20,517	99,350	
	<b>Total</b>	<b>1,225,140</b>	<b>188,285</b>	<b>15,592,642</b>	<b>136,651</b>	<b>1,646,875</b>	<b>1,189,306</b>	<b>104,715</b>	<b>20,083,613</b>	



## TO HDCS MEMBERS, PARTNERS, SUPPORTERS AND FRIENDS:

Your trust and all kinds of support in HDCS has been one of the main reasons why we have come this far in these 25 years. We would like to thank you all for having faith in our organisation and participating in our values. Together we become stronger and better equipped to help and transform the lives of the impoverished and marginalized people living in Nepal.

### HOW TO SUPPORT HDCS

- Volunteer at KISC (international volunteer teachers)
- Volunteer at our hospitals (medical doctors and nurses)
- Support ABBS through gifts and grants
- Support KISC in our fundraising efforts as we shift to a new site  
[www.kisc.edu.np](http://www.kisc.edu.np)
- Support HDCS as our new projects are underway  
[www.hdcsnepal.org](http://www.hdcsnepal.org)

**Human Development & Community Services • P.O. Box 8975, EPC  
1461, Kathmandu Nepal • Tel: +977-1-5015062 • [www.hdcsnepal.org](http://www.hdcsnepal.org) •  
[www.facebook.com/hdcsnepal/](https://www.facebook.com/hdcsnepal/)**